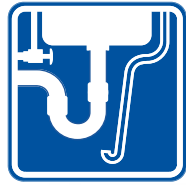
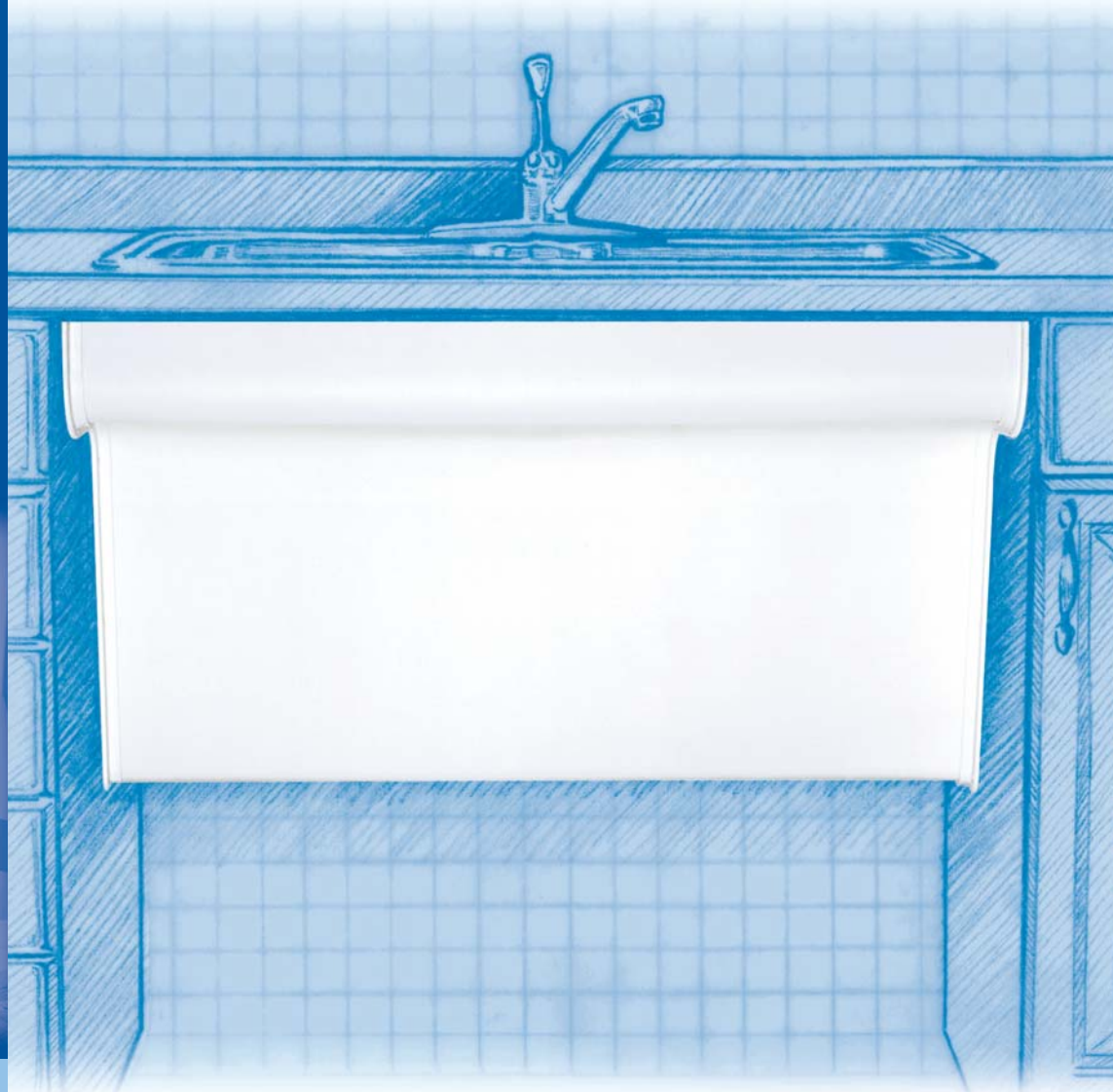




Clean design
and durable
protection for
ADA-compliant
sinks and
lavatories
installed into
countertops



BASIN GUARD[®]
UNDERSINK PROTECTIVE ENCLOSURES



Interior designers appreciate the versatility of BASIN GUARD for easy application in homes, schools, commercial businesses, hotels, and more.

Since 1990, we at TRUEBRO, INC. have concentrated our efforts on "Making America Accessible" by creating products that address ADA-mandated undersink wheelchair accessibility.

Specifying TRUEBRO is your assurance of protecting people with disabilities while providing quality, durability, and improved aesthetics.

BASIN GUARD[®] is the latest design in undersink protection from TRUEBRO. This smooth, attractive enclosure conceals unsightly piping and mechanical components, and still maintains ADA mandated knee and foot clearance. BASIN GUARD can be installed under kitchen, classroom, and lavatory sinks where counter tops and sidewalls are present. Bottom opening allows for easy service access.

TRUEBRO[®]
MAKING AMERICA ACCESSIBLE

IPS CORPORATION

An **IPS** Brand



Features and Benefits:

ADA-conforming design protects wheelchair users from scalding and sharp, abrasive surfaces.

When installed, all plumbing and mechanical components are concealed.

36" and 42" enclosures are easy to specify, stock and install.

The BASIN GUARD may be used with virtually any ADA-compliant sink or restroom lavatory where countertops and sidewalls are present. Such sinks are commonly specified in H.U.D. housing, elderly housing, condominiums, hotels, motels, and schools with in-classroom sinks.

High-impact, UV-protected vinyl maximizes product life cycle.

The BASIN GUARD is molded from impact-resistant, stain-resistant, and chemical-resistant protective vinyl for durability, safety, and long life.

"Front shield" design protects undersink components from tampering.

Durable, heavy-duty enclosure conceals all continuous-waste piping, electronic faucet components, dishwasher connections, garbage disposals, mixing valves, trap primers, and instantaneous water heaters.

Strict code compliance minimizes risk.

The BASIN GUARD complies with ADA article 4.19.4, California Plumbing Code 1504.2.1, ANSI A117.1, BOCA P 1203.4, and other state and local regulations. BASIN GUARD also has a flammability resistance, tested in accordance with Underwriters Laboratories for the UL 94 standard with a V-0 rating.



Available in white or beige (as shown above).

Suggested Specification:

ADA-compliant wheelchair accessible lavatories with countertops and sidewalls shall be equipped with the molded TRUEBRO, INC. BASIN GUARD undersink protective enclosure (Model #36 for 36" wide or #42 for 42" wide), Color: beige or white.

Specifications:

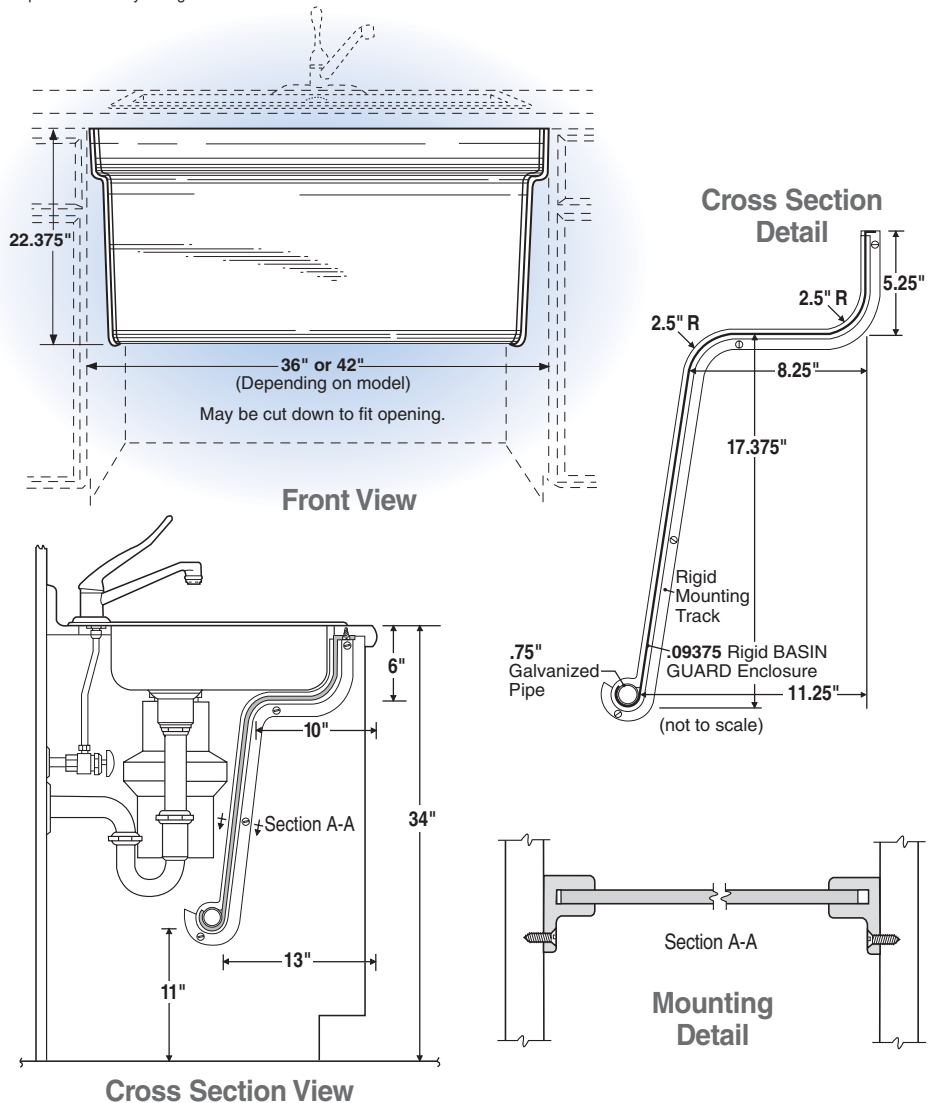
Material	Rigid high-impact, stain-resistant PVC
Nominal Wall	.093" constant
Finish	Fine haircell
UV Protection	Will not fade or discolor
Durability	Virtually indestructible
Fasteners	Eight (8) – #6 X 1/2" screws
Color	White or beige
Paintability	Apply acrylic enamel or latex paint
Flammability	UL-94 V-0, 5VB

The BASIN GUARD must be specified in combination with ADA-conforming sinks (example, Elkay GEGR or LRAD Line, or Just Manufacturing ADA Line with rear drain) with a maximum 6" deep bowl and rear waste outlet. Two sizes are available: Model #36 for maximum cabinet opening of 36" and Model #42 for a maximum cabinet opening of 42". BASIN GUARD may be trimmed smaller to fit actual opening size.

Models:

#36	36" wide – available in white or beige
#42	42" wide – available in white or beige

Specifications may change without notice.



IPS Corporation, 202 Industrial Park Lane, Collierville, TN 38017
(901) 853-5001 (800) 340-5969 FAX: (901) 853-5008
e-mail: info@truebro.com Internet: http://www.truebro.com



BASIN GUARD CLASSIFIED
BY UNDERWRITERS
LABORATORIES, INC.®
IN ACCORDANCE WITH
ADA article 4.19.4 22FF

U.S. and Canadian Patents:
77,065, D375,154